

See discussions, stats, and author profiles for this publication at: <https://www.researchgate.net/publication/221689421>

Promotion of Myelopoiesis in Myelosuppressed Mice by Ganoderma lucidum Polysaccharides

Article in *Frontiers in Pharmacology* · February 2012

DOI: 10.3389/fphar.2012.00020 · Source: PubMed

CITATIONS

10

READS

30

4 authors, including:



[Zhi-Bin Lin](#)

Peking University Health Science Center

178 PUBLICATIONS 3,863 CITATIONS

[SEE PROFILE](#)

Some of the authors of this publication are also working on these related projects:



kidney disease [View project](#)



Dendritic cells [View project](#)



Promotion of myelopoiesis in myelosuppressed mice by *Ganoderma lucidum* polysaccharides

Xiao-Ling Zhu^{1*}, Ji-Hong Liu², Wei-Dong Li¹ and Zhi-Bin Lin^{1*}

¹ Department of Pharmacology, School of Basic Medical Science, Peking University Health Science Center, Beijing, China

² Health and Medical Analysis Center, Peking University, Beijing, China

Edited by:

Michael Heinrich, University of London, UK

Reviewed by:

Michael Heinrich, University of London, UK

Keliang Xie, General Hospital of Tianjin Medical University, China
M. Pilar Gómez-Serranillos, Universidad Complutense, Spain

*Correspondence:

Xiao-Ling Zhu and Zhi-Bin Lin,
Department of Pharmacology, School of Basic Medical Science, Peking University Health Science Center, Beijing 100191, China.
e-mail: xiaolingzhu88@yahoo.com.cn;
linzb@public3.bta.net.cn

Our previous studies demonstrated that *Ganoderma lucidum* polysaccharides (*Gl*-PS) exhibit potent immunomodulating effects. Immunomodulation plays an important role in hematopoiesis. To investigate the possible mechanism by which *Gl*-PS promote myelopoiesis during myelosuppression induced by cyclophosphamide, mice were injected intraperitoneally (i.p.) once daily with 2.5 mg/kg of *Gl*-PS for 10 days and were treated i.p. once daily with cyclophosphamide (100 mg/kg) on days 2 through 4. In the present study *in vivo* and *in vitro*, we find that *Gl*-PS selectively bind to bone marrow stromal cells, stimulate the secretion of hematopoietic growth factors, and enhance the clonogenic activities of hematopoietic and stromal cells to promote hematopoiesis in myelosuppressed mice.

Keywords: *Ganoderma lucidum* polysaccharides, myelosuppression, hematopoiesis

INTRODUCTION

Ganoderma lucidum (known in China as *Lingzhi* and in Japan as *Reishi*) is a fungus of the family Polyporaceae that is regarded by Chinese people as the “miraculous king of herbs” and has attained a reputation in the East as a beneficial herbal substance. *Lingzhi* was first indexed as a longevity-promoting and tonic herb of the non-toxic superior class in the Shen Nong’s *Materia Medica* (206 BC–8 AD). In clinical trials, *G. lucidum* exhibits therapeutic efficacy in treating cancer, insomnia, chronic bronchitis, hepatitis, and leukopenia. Polysaccharides are one of the primary components of *G. lucidum*. Numerous studies have confirmed the immunoregulatory activities of *Ganoderma lucidum* polysaccharides (*Gl*-PS; Lin, 2005; Zhu and Lin, 2006; Zhao et al., 2010). Cyclophosphamide (Cy), a widely employed alkylating agent and a major constituent of combination chemotherapy regimens; it causes myelosuppression, which limits chemotherapy’s dose intensification and precludes the administration of optimal treatments for cancer patients (Bear, 1986).

Prior research has demonstrated that immune cells, such as T and B lymphocytes, macrophages, and dendritic cells, regulate hematopoiesis. Many hematopoietic growth factors (HGF) are produced by immune cells (Wang et al., 2005). Some HGF are available for the clinical treatment of myelosuppression and anemia. However, the use of HGF promotes the entry of hematopoietic stem cells (HSCs) into the cell cycle, depleting the supply of HSCs and inhibiting the long-term reconstitution of hematopoiesis (Homung and Longo, 1992). Previous studies have indicated that clinical trials applying these growth factors, such as stem cell factor (SCF), interleukin-3 (IL-3), granulocyte colony-stimulating factor (G-CSF), and granulocyte-macrophage

colony-stimulating factor (GM-CSF), for bone marrow recovery after chemotherapy may carry the risk of potentially stimulating the growth of remaining tumor cells (Pedrazzoli et al., 1995; Hassan and Zander, 1996; Gutschalk et al., 2006). The use of erythropoietin (EPO) is likely to be restricted in oncology because it increases the risk of death and serious cardiovascular events (Steinbrook, 2007). Therefore, it is necessary to search for compounds that promote hematopoiesis, enhance immunity, potentiate anticancer effects, and detoxify anticancer drugs. Polysaccharides isolated from mushrooms and plants may be a source of beneficial compounds, as they have been reported to induce hematopoiesis (Jin et al., 2003; Hatano et al., 2004; Liao et al., 2005).

Immunomodulation plays an important role in hematopoiesis. Our previous study indicated that *Gl*-PS stimulate immune cells to secrete cytokines, and restore the bone marrow cells (BMC) counts and peripheral hemograms reduced by Cy. The beneficial effects induced by the *Gl*-PS treatment were not paralleled with any evident toxic or side effects. (Lin, 2005; Zhu et al., 2007). However, the effects of *Gl*-PS on hematopoietic progenitor cells, bone marrow stromal cells (BMSC), secretion of hematopoietic regulation factors, apoptosis of the whole BMCs, and bonding pattern, is poorly understood. Therefore, we investigated the effects of *Gl*-PS on regulating hematopoiesis in myelosuppressed mice and explored their mechanism of regulation.

MATERIALS AND METHODS

ANIMALS AND DRUGS

Male C57BL/6J mice (6–8 weeks old) from an inbred strain were purchased from the Department of Experimental Animals, Peking University Health Science Center (PUHSC), Beijing, China.

The experiments for this study were carried out in accordance with the Care and Use of Experimental Animals Committee of PUHSC. *G. lucidum* (Leyss. ex Fr.) Karst. (Lingzhi), cultivated on wooden logs, was obtained from the *G. lucidum* Production Base in Taining County, Fujian Province in China. The quality of *G. lucidum* fruit bodies was monitored by Professor Mao XiaoLan, a senior researcher of the National Institute of Microbiology and Microbiological Institute, China Academy of Science. The suitable *G. lucidum* strain that was selected for cultivation with wooden logs was Ga0801 (No. of strain), which was preserved by Professors Shu-Qian Lin and Sai-Zhen Wang of the Fuzhou Institute of Green Valley Bio-Pharm Technology in China and identified by DNA fingerprinting analysis. *Gl*-PS were isolated through boiling-water extraction of the fruit bodies of *G. lucidum*, followed by ethanol precipitation, dialysis, and protein depletion using the Sevag method. The component sugars and molecular weight distributions of the glycopeptides were determined by gel permeation chromatography (GPC) and high performance liquid chromatography (HPLC). The structures of the glycopeptides were detected by IR, ¹HNMR, and ¹³CNMR. The isolated *Gl*-PS are peptide-bound polysaccharides and have a molecular weight of 584,900, with a ratio of polysaccharides to peptides of 93.61%:6.49%. The polysaccharides consist of D-rhamnose, D-xylose, D-fructose, D-galactose, D-mannose, D-glucose, and uronic acid, with a molar ratio of 0.793:0.964:2.944:0.167:0.389:7.94:0.33. The glycoside linkage was primarily in the β-form, with minor α-bonding. The peptides contain 16 amino acids (Asp, Thr, Ser, Glu, Gly, Ala, Cys, Val, Met, Ile, Leu, Phe, Lys, His, Arg, and Pro; Lin et al., 2003). The purity of the *Gl*-PS is 98%, which was analyzed by HPLC. As a water-soluble powder, *Gl*-PS were dissolved in physiological concentrations of saline for *in vivo* experiments or in serum-free RPMI medium 1640 (Gibco Laboratories, Grand Island, NY, USA) for *in vitro* experiments, filtered through a 0.22-μm filter and stored at 4°C for future use. Cy and 5-fluorouracil (5-FU, Shanghai Hualian Pharmaceutical Co. Ltd., Shanghai, China) were dissolved in sterilized saline before being injected to mice. Endotoxins in *Gl*-PS samples were assayed under endotoxin-free experimental conditions using a limulus amoebocytes lysate chromogenic assay kit (Beijing BXGK Technology Development Co., Ltd., Beijing, China). The quantity of endotoxin in *Gl*-PS was less than 0.011 EU/mg, indicating that endotoxin contamination in *Gl*-PS was negligible.

LABELING OF *GL*-PS WITH FLUORESCHEIN ISOTHIOCYANATE

Fluorescein isothiocyanate (FITC)-*Gl*-PS were prepared using a modification of the method described previously (Thornton et al., 1996). In short, 20 mg of *Gl*-PS or dextran (MW 70,000, Sigma, USA) were dissolved in 4 ml of 0.1 M sodium carbonate, pH 9.0, mixed with 14 mg of (FITC, Sigma Chemical Co., St. Louis, MO, USA), stirred at room temperature for 4 h while being protected from light and centrifuged (10,000 × g, 1 min). The conjugated *Gl*-PS were separated from the unbound dye by gel filtration using a Sephadex G-25 (Pharmacia, NJ, USA) column equilibrated with phosphate-buffered saline (PBS). The necessary elution fractions were collected. The concentration of FITC was determined spectrophotometrically at 492 nm by a FITC standard curve, and the

polysaccharides concentration of elution fractions was determined using a standard curve of serial-diluted dextran using the phenol-H₂SO₄ method. The concentration of FITC-*Gl*-PS was adjusted to 1 mg/ml.

INDUCTION OF MYELOSUPPRESSION AND TREATMENT REGIME

Mice were divided into three groups: (1) untreated normal controls, (2) mice injected with *Gl*-PS (2.5 mg/kg), and (3) mice injected with a vehicle (equivalent volume of sterile physiological saline) as a negative control. Mice were administered *Gl*-PS or vehicle i.p. once daily for 10 consecutive days and were treated i.p. with Cy (100 mg/kg) once daily on days 2 through 4.

PREPARATION OF SPLENOCYTE-CONDITIONED MEDIUM, *GL*-PS-SPLENOCYTE-CONDITIONED MEDIUM, AND PHYTOHEMAGGLUTININ P-SPLENOCYTE-CONDITIONED MEDIUM

Single-cell spleen suspensions were pooled in serum-free RPMI-1640 medium (Gibco Laboratories, NY, USA) by filtering the suspension through stainless steel sieves (200 mesh) with the aid of a glass homogenizer to exert gentle pressure on the spleen fragments. The splenocytes (1×10^7) were cultured in complete RPMI-1640 medium without splenocyte-conditioned medium (SCM) or with *Gl*-PS-splenocyte-conditioned medium (*Gl*-PS-SCM) at concentrations ranging from 25 to 200 μg/ml, or with phytohemagglutinin (PHA) at a final concentration of 10 μg/ml phytohemagglutinin p-splenocyte-conditioned medium (PHA-SCM). After 48 h, the respective supernatants were collected and sterilized by filtration and stored at -20°C.

HEMATOPOIETIC PROGENITOR COLONY-FORMING UNIT-GRANULOCYTE-MACROPHAGE, MULTIPOTENTIAL COLONY-FORMING UNIT-GRANULOCYTE, ERYTHROCYTE, MACROPHAGE, MEGAKARYOCYTE, AND ERYTHROID (BFU-E) COLONY-FORMING CELL ASSAY

CFU-Mix, BFU-E, and colony-forming unit-granulocyte-macrophage (CFU-GM) assays were performed as previously described (Wang et al., 2005). In brief, the culture system of CFU-GM consisted of 0.2 ml of 0.3% agar, 0.5 ml of horse serum (Hyclone Laboratories, Logan UT, America), 0.2 ml of bone marrow-derived mononuclear cells (BM-MNC; 1×10^6 cells/ml), 0.2 ml of various SCM or *Gl*-PS, and 0.9 ml of RPMI-1640, which was plated in 24-well plates (0.5 ml/well). After 7 days of culture, the number of granulocyte and/or macrophage colonies containing ≥50 cells was counted using an inverted microscope (Olympus, NY, USA). The total volume of the CFU-Mix and BFU-E culture systems was 2 ml, containing 10% 0.1 mM 2-mercaptoethanol, 1% 2 mM L-glutamine, 1% bovine serum albumin (BSA), 30% fetal calf serum (FCS), 2 units erythropoietin (EPO; Sigma, St. Louis, MO, USA), 20% SCM, 10% BM-MNC (2.5×10^6 cells/ml), and 0.7 ml 2.7% methylcellulose in Iscove's modified Dulbecco's medium (IMDM); this volume was plated into 96-well plates (0.2 ml/well). After seven to 10 days of culture, the number of BFU-E colonies was counted. BFU-E colonies displayed a red color and burst. After 12 days of culture, the number of CFU-mix colonies was counted. The CFU-mix was identified by its ability to form a mixed colony in which reddish cells (erythroid cells) mixed with colorless cells (granulocytes, macrophage, and megakaryocyte).

HIGH PROLIFERATIVE POTENTIAL COLONY-FORMING CELLS ASSAY

As described previously, 5-FU-resistant high proliferative potential colony-forming cells (HPP-CFCs) were assayed (Wang et al., 2005). The culture system consisted of 20% FCS, 10% BSA, 40% IMDM, 10% serum of aplastic anemia mice, 10% BMC (10^5 cells), and 10% agar (33 g/L). After 14 days of culture, HPP-CFC were identified by their ability to form high proliferative potential colonies with diameters that were equal to or greater than 0.5 mm.

COLONY-FORMING UNIT-FIBROBLAST ASSAY AND PREPARATION OF CONDITIONED MEDIUM FOR BONE MARROW STROMAL CELLS

The colony-forming unit-fibroblast (CFU-F) assay was carried out as previously described (Wang et al., 2005). A total of 1×10^6 BMC were incubated in Dulbecco's Modified Eagle Medium supplemented with 10% FCS, 10% SCM, and 1% penicillin–streptomycin at 37°C and 5% CO₂. At intervals of 4 days, the cell culture medium was replaced. After 10 days, the medium was removed, and the dishes were Wright–Giemsa stained. A fibroblast colony of greater than 20 cells was scored as a CFU-F. When BMSC achieved confluence, the confluent cell layers were washed twice with versene (Ca²⁺- and Mg²⁺-free 0.1% ethylenediaminetetraacetic acid (EDTA) in PBS). Adherent BMSC were detached with 0.25% trypsin in versene and seeded at a density of 1×10^6 cells/well in 24-well microplates in complete RPMI-1640 medium with *Gl*-PS (25–200 µg/ml) for 48 h or in an equal volume of serum-free RPMI-1640 as a control, and supernatants were collected and stored as small aliquots at –20°C until use. On day 11 after *Gl*-PS administration, BMC in myelosuppressed mice were removed to evaluate the *in vivo* effect of *Gl*-PS on CFU-F formation.

CYTOKINE ASSAY

Cytokines were measured using a sandwich enzyme-linked immunosorbent assay (ELISA) kit (R&D systems, Minneapolis, MN, USA) according to the manufacturer's protocol.

APOPTOSIS ASSAY

Apoptosis of BMC was determined with an Annexin V-FITC Apoptosis Detection Kit I (Pharmingen, San Diego, CA, USA).

STATISTICAL ANALYSIS

Results were presented as means ± SEM of six mice. One-way analysis of variance (ANOVA) followed by Dunnett's *t*-test was employed. *P* values below 0.05 were considered significant.

RESULTS

EFFECTS OF *GL*-PS ON THE CLONOGENIC ACTIVITY OF BONE MARROW-DERIVED HEMATOPOIETIC PROGENITOR CELLS AND STROMAL CELLS *IN VITRO* AND *IN VIVO*

Our previous research indicated that, in Cy-induced myelosuppressed mice, chronic treatment with *Gl*-PS (i.p., at 2.5 mg/kg) resulted in the accelerated recovery of BMC and peripheral hemograms while enhancing the function of immune cells. No toxic or other side effects were observed in *Gl*-PS-treated mice during these experiments (Zhu et al., 2007). To explore the mechanism of action of *Gl*-PS, we designed experiments *in vivo* and *in vitro*. The results of the present study demonstrate that *Gl*-PS (2.5 mg/kg) promote myelopoiesis *in vivo* in myelosuppressed

mice, but that directly adding *Gl*-PS (25–200 µg/ml) to cultures of various hematopoietic progenitor cells had no effect on colony formation (data not shown). However, the addition of *Gl*-PS to SCM increased colony-forming unit counts *in vitro*. Compared with the non-stimulation of normal SCM, *Gl*-PS–SCM treatment significantly promoted the colony formation of CFU-GM, CFU-Mix, BFU-E, and CFU-F, as observed *in vitro* (Figure 1). *Gl*-PS at a concentration of 100 µg/ml attained the maximal effect of *Gl*-PS–SCM on CFU-GM (Figure 1), which was higher than that of the positive control PHA–SCM. PHA–SCM is the source of colony-stimulating factors, which stimulate splenic mononuclear cells to secrete several HGF (Wang et al., 2005). Nevertheless, *Gl*-PS and normal SCM alone had no such colony-stimulating activity. After a 5-FU injection, only a 5-FU-resistant subset of resting stem cells, termed HPP-CFC, survived. *Gl*-PS, *Gl*-PS–SCM, and *Gl*-PS–medium for bone marrow stromal cells (BMSCM) alone failed to stimulate HPP-CFC formation in place of serum from aplastic anemia mice (data not shown). However, *Gl*-PS–SCM induced by *Gl*-PS synergized with the aplastic anemia serum to increased HPP-CFC counts (Figure 1). In an *in vivo* experiment, *Gl*-PS injection increased CFU-GM, BFU-E, CFU-Mix, and CFU-F counts in myelosuppressed mice on day 11 (Figure 2). These results suggest the presence of colony-stimulating factors in *Gl*-PS–SCM. *Gl*-PS promoted myelopoiesis through the indirect stimulation of HGF secretion, rather than direct stimulation of hematopoietic progenitor cell proliferation.

CYTOKINES IN *GL*-PS–SCM, *GL*-PS–BMSCM, AND SERUM

In *in vitro* experiments, the production of IL-1, IL-6, GM-CSF, and G-CSF in *Gl*-PS–SCM and *Gl*-PS–BMSCM induced by *Gl*-PS for 48 h was significant higher than that of normal SCM. In

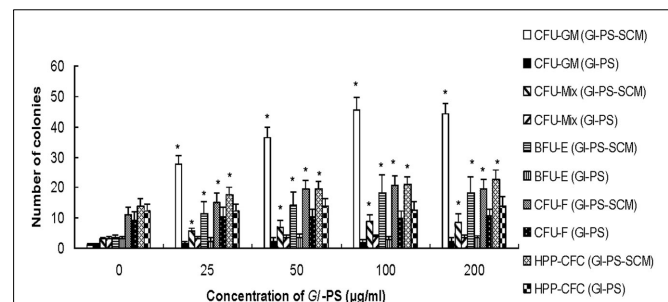
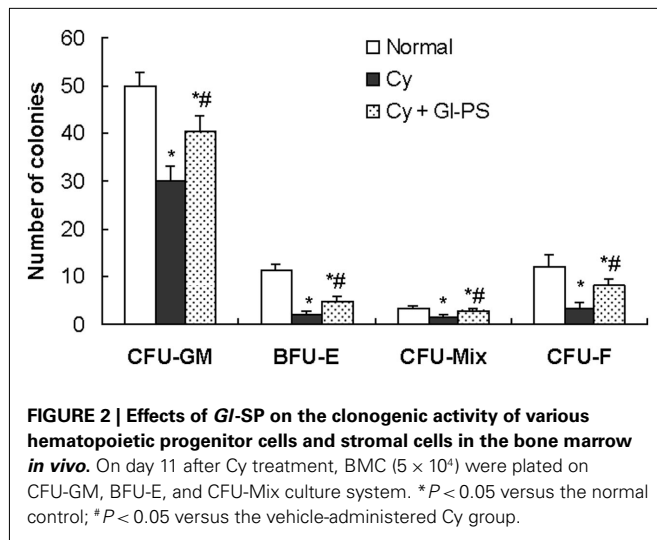
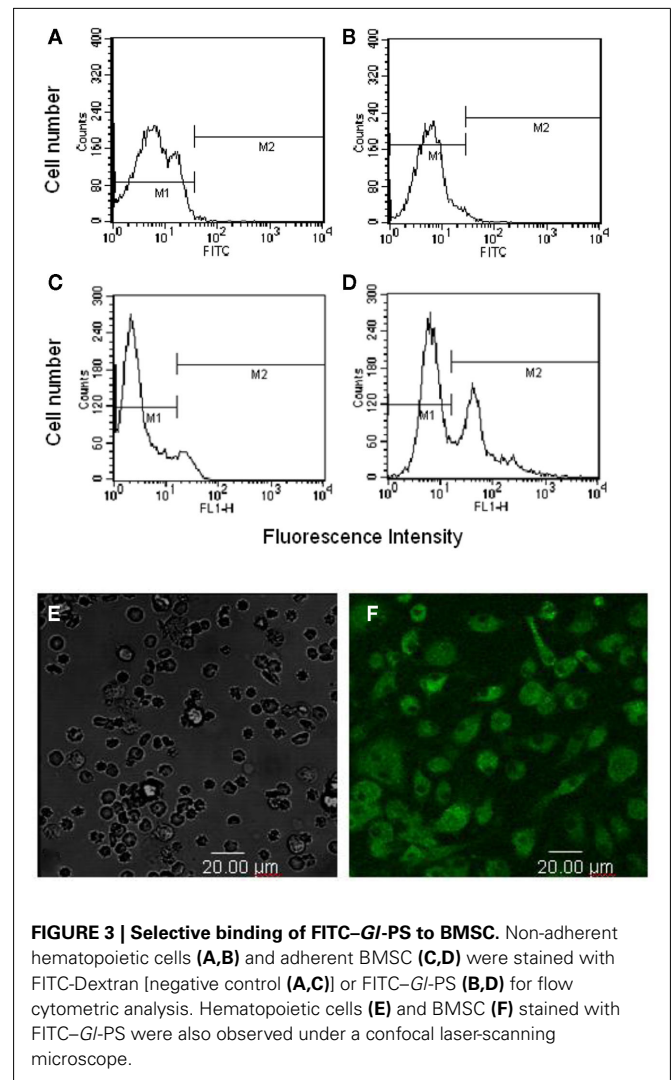


FIGURE 1 | Effect of *Gl*-PS and *Gl*-PS–SCM on the clonogenic activities of various hematopoietic progenitor cells and stromal cells in bone marrow *in vitro*. Splenocytes (1×10^7) were cultured in complete RPMI-1640 medium with *Gl*-PS (*Gl*-PS–SCM) at various concentrations (0–200 µg/ml) or with phytohemagglutinin (PHA) at a final concentration of 10 µg/ml (PHA–SCM). After 48 h, the supernatants were collected for clonogenic assays. Bone marrow cells (BMC, 5×10^4 /well) were plated on CFU-GM, BFU-E, and CFU-Mix culture systems containing *Gl*-PS (0–200 µg/ml) alone or *Gl*-PS–SCM induced by *Gl*-PS (0–200 µg/ml). Colony numbers were counted (CFU-GM on day 7, BFU-E on day 7–10, and CFU-Mix on day 12). BMC (10^5) were collected from 5-FU-treated mice and were cultured for 14 days in a HPP-CFC culture supplemented with 20% (v/v) *Gl*-PS or *Gl*-PS–SCM. **P* < 0.05 versus control (concentration of *Gl*-PS: 0 µg/ml). The colony-stimulating activities of PHA–SCM, which served as a positive control, were 31.4 ± 4.5 for CFU-GM, 12.1 ± 2.6 for BFU-E, 4.5 ± 1.2 for CFU-Mix, 16.2 ± 4.0 for CFU-F, and 21.2 ± 3.5 for HPP-CFC.



addition, an increase in SCF levels was observed in *GI-PS*-BMSCM (Table 1). In *in vivo* experiments, *GI-PS* injection increased the levels of IL-1 β , IL-6, G-CSF, and TNF- α , which were undetectable in normal sera, and IFN- γ in sera derived from myelosuppressed mice on day 11 (Table 2). *GI-PS* stimulated the production of HGF, including G-CSF, GM-CSF, IL-1, and IL-6 from splenocytes and G-CSF, GM-CSF, IL-1, IL-6, and SCF from BMSC. These HGF primarily stimulate myelopoiesis (Wang et al., 2005). IL-3 was not detected in either *GI-PS*-SCM or *GI-PS*-BMSCM (data not shown), and SCF was undetectable in *GI-PS*-SCM, which might be partially due to the absence of a *GI-PS* receptor and/or production of IL-3 or SCF by the cells in culture. HPP-CFC formation requires the combined action of SCF, IL-3, GM-CSF, and G-CSF (Wang et al., 2005). The results suggested that the HGF contained in *GI-PS*-SCM and *GI-PS*-BMSCM synergized with the HGF contained in the serum of aplastic anemia mice to promote HPP-CFC formation. *GI-PS*, normal SCM and BMSCM alone exhibited no such colony-stimulating activity.

The maintenance of hemopoiesis necessitates a balance between self-renewal and differentiation into mature blood cells. A class of cytokines involved in controlling this balance are the HGF, which stimulate the proliferation and maturation of progenitor cells. Hematopoietic inhibitors inhibit the proliferation of HSCs and progenitor cells, protect HSCs from excessive differentiation and maintain HSCs in G0/G1 cell cycle stage (Cheng and Wang, 2002). Studies indicate that HGF, such as IL-1, GM-CSF, and SCF, accelerate cell entry into S phase, make hematopoietic cells more vulnerable to cytotoxic agents and cause the depletion of both the number and function of HSCs. *GI-PS* injection increased TNF- α and IFN- γ levels in sera from myelosuppressed mice (Table 2). We hypothesized that *GI-PS* accelerate the recovery of myelopoiesis after chemotherapy by stimulating the secretion of IL-1, IL-6, G-CSF, GM-CSF, and SCF to promote hematopoietic precursor proliferation and differentiation and by upregulating negative regulators, such as TNF- α and IFN- γ , to prevent HSC cycling, resulting in HSC protection and inhibition of HSC depletion.



SELECTIVE BINDING OF *GI-PS* TO BONE MARROW STROMAL CELLS

Bone marrow stromal cells and non-adherent cells were stained with FITC-*GI-PS* for 1 h at 4°C. Most of the adherent BMSC, but not non-adherent hematopoietic cells, were positively stained by FITC-*GI-PS* (Figures 3A–F), suggesting that *GI-PS* selectively bound to BMSC.

EFFECT OF *GI-PS* ON BMC APOPTOSIS

Bone marrow cells apoptosis was markedly increased after i.p., injection of Cy on day 5 during the treatment regime. No difference in BMC apoptosis was observed between the *GI-PS* group and the vehicle group in myelosuppressed mice (Figure 4).

DISCUSSION

Blood cells and immune cells commonly originate in HSCs. BMSC possess immunoregulatory activity and are able to support hematopoiesis. Myeloid hematopoiesis, lymphoid hematopoiesis, and immunoregulation adjacently exist in the hematopoietic inductive microenvironment (Wang et al., 2005). So

Table 1 | Levels of hematopoietic growth factors in *GI-PS-SCM* and *GI-PS-BMSCM*.

Concentration of <i>GI-PS</i> ($\mu\text{g/ml}$)	G-CSF	GM-CSF	IL-1 β	IL-6	SCF
<i>GI-PS-SCM</i>					
0	0.0 \pm 0.0	5.9 \pm 2.3	12.7 \pm 4.8	80.3 \pm 6.4	0.0 \pm 0.0
25	472.6 \pm 53.7 ^a	15.0 \pm 3.4 ^a	99.5 \pm 12.6 ^a	289.2 \pm 22.4 ^a	0.0 \pm 0.0
50	634.8 \pm 82.1 ^a	26.7 \pm 4.9 ^a	169.0 \pm 14.7 ^a	439.8 \pm 41.0 ^a	0.0 \pm 0.0
100	801.3 \pm 99.2 ^a	38.7 \pm 4.6 ^a	281.4 \pm 22.5 ^a	635.7 \pm 77.0 ^a	0.0 \pm 0.0
200	1070.2 \pm 123.0 ^a	50.2 \pm 6.3 ^a	479.5 \pm 40.7 ^a	857.3 \pm 104.6 ^a	0.0 \pm 0.0
<i>GI-PS-BMSCM</i>					
0	8.0 \pm 3.1	3.2 \pm 1.5	5.3 \pm 3.1	38.2 \pm 5.3	20.3 \pm 4.1
25	20.8 \pm 4.8 ^a	11.5 \pm 2.4 ^a	9.5 \pm 3.6	155.7 \pm 6.9 ^a	43.2 \pm 7.5 ^a
50	38.8 \pm 7.3 ^a	18.7 \pm 4.8 ^a	7.8 \pm 3.1	298.8 \pm 15.2 ^a	76.0 \pm 10.7 ^a
100	71.2 \pm 11.2 ^a	49.2 \pm 10.3 ^a	8.2 \pm 5.2	797.0 \pm 33.3 ^a	92.5 \pm 13.6 ^a
200	101.7 \pm 20.5 ^a	50.7 \pm 17.0 ^a	9.0 \pm 4.9	922.2 \pm 72.2 ^a	155.6 \pm 19.5 ^a

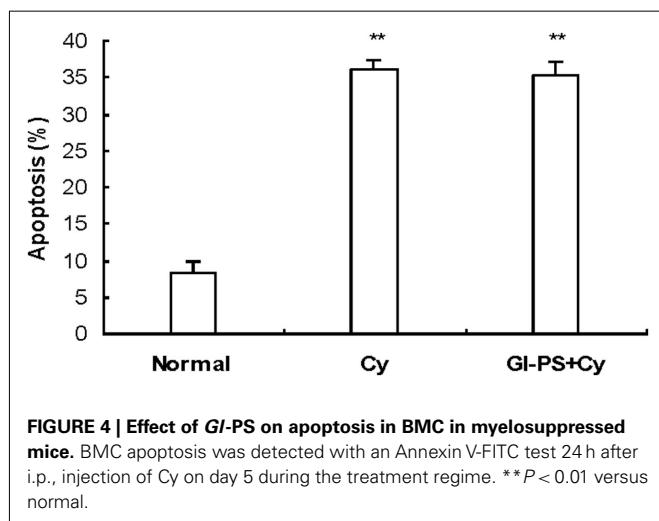
Splenocytes (1×10^7) or bone marrow stromal cells (1×10^6) were cultured with *GI-PS* (0–200 $\mu\text{g/ml}$) for 48 h. *GI-PS*-splenocyte-conditioned medium (*GI-PS-SCM*) and conditioned medium of bone marrow stromal cells (*BMSCM*) induced by *GI-PS* were collected to measure cytokines by ELISA.

^a $P < 0.05$ versus control (concentration of *GI-PS*: 0 $\mu\text{g/ml}$).

Table 2 | Comparison of serum cytokine concentrations (pg/ml) in naive and myelosuppressed mice treated with *GI-PS* (i.p., 2.5 mg/kg) on day 11.

Groups	IL-1 β	IL-6	G-CSF	TNF- α	IFN- γ
Normal	0.0 \pm 0.0	0.0 \pm 0.0	0.0 \pm 0.0	0.0 \pm 0.0	80.1 \pm 20.4
Cy + vehicle	5.4 \pm 2.8 ^a	0.0 \pm 0.0	70.5 \pm 18.5 ^a	0.0 \pm 0.0	67.8 \pm 17.9
Cy + <i>GI-PS</i>	15.6 \pm 3.7 ^b	42.1 \pm 1.3 ^b	150.7 \pm 27.3 ^b	50.4 \pm 4.4 ^b	150.5 \pm 30.2 ^b

^a $P < 0.05$ versus normal control and ^b $P < 0.05$ versus vehicle control.



immunomodulation is closely related to hematopoiesis. Myelosuppression and immunosuppression induced by chemoradiotherapy is a big problem restricting therapeutic effect of tumor. There is no ideal drug to solve it at present. Therefore, seeking the drugs that prevent and treat myelosuppression of chemoradiotherapy for enhancing the therapeutic effect and improving the prognosis, with no/low toxicity, is challenging.

Our previous studies showed that in cyclophosphamide-induced myelosuppressed mice, chronic treatment with low-dose *GI-PS* resulted in accelerated recovery of BMC, red blood cells (RBC), and white blood cells (WBC), while enhancing function of immune cells (Zhu et al., 2007). In the present study, we found low-dose *GI-PS* promoted myelopoiesis *in vivo* in myelosuppressed mice, but adding *GI-PS* (25 ~ 200 $\mu\text{g/ml}$) to the colony culture of various hematopoietic progenitors directly, had no promotive effect on colony formation. However, addition of *GI-PS-SCM* or *GI-PS-BMSCM* increased colony formation of CFU-GM, CFU-Mix, and BFU-E *in vitro*. Our findings first demonstrated that most of the adherent BMSC but not non-adherent hematopoietic cells were positively stained by FITC-*GI-PS*, so *GI-PS* specifically bound to BMSC. BMSC not only provide the structural scaffolding for hematopoietic cell growth, but also secrete various HGF to stimulate hematopoiesis (Wang et al., 2005).

One observation showed that *Ganoderma lucidum* polysaccharide fraction (GLB) combined with 5-FU decreased the toxicity of 5-FU on BMCs (Liu et al., 2011). Several studies had reported that *GI-PS* had significant effects on anti-radiation and leucopoiesis (Liu et al., 1985; Chen et al., 2000; Wu et al., 2003). In a stem cell expansion culture, polysaccharide fraction of *G. lucidum* (F3) possessed the thrombopoietin (TPO) and GM-CSF like functions to enhance the survival/renewal abilities of primitive hematopoietic stem/progenitor cells (Chen et al., 2010). A fraction (F3) of Reishi

polysaccharides had been shown to activate the expression of IL-1, IL-6, IL-12, IFN- γ , TNF- α , GM-CSF, G-CSF, and M-CSF in mouse splenocytes, and from this three subfractions had been prepared where F3G1 activates IL-1, IL-12, TNF- α , and G-CSF, F3G2 activates all the cytokines as F3 does, and F3G3 activates only IL-1 and TNF- α (Chen et al., 2004).

Our research confirmed that CFU-F and CSF production in BMSC was significantly inhibited by Cy, and *Gl*-PS (2.5 mg/kg, i.p.) significantly increased CFU-F formation in bone marrow from myelosuppressed mice. In our study, *Gl*-PS stimulated production of some HGF including G-CSF, GM-CSF, IL-1, and IL-6 from spleen cells and G-CSF, GM-CSF, IL-1, IL-6, and SCF from BMSC. These HGF mainly stimulate myelopoiesis.

Primitive hematopoietic stem cell (PHSC) and progenitor cells in bone marrow have an ability to proliferate and differentiate into mature blood cells. However, maintenance of haemopoiesis necessitates a balance between self-renewal on the one side, and differentiation into the various types of blood cell on the other. The cytokines involved in controlling this balance are HGF, which direct the division and maturation of the progenitor cells, and hematopoietic inhibitory factors, which inhibit PHSC and progenitor cells proliferation, protect PHSC from excessive differentiation in their expansive system, and keep them in G₀/G₁ cell cycle status (Cheng and Wang, 2002). Our experiments showed that low-dose injection of *Gl*-PS increased IL-1 β , IL-6, G-CSF, TNF- α , and IFN- γ levels in sera from myelosuppression mice. We hypothesized that

Gl-PS accelerated recovery of hematopoiesis after chemotherapy by promoting primitive and committed hematopoietic precursors proliferation induced by HGF secretion on the one hand, and on the other increasing negative regulatory factors such as TNF- α and IFN- γ to prevent PHSC cycling resulted in protecting PHSC from damage.

In conclusion, rather than directly stimulating hematopoietic progenitor proliferation and inhibition of apoptosis in BMC, *Gl*-PS promoted myelopoiesis by selective binding to BMSC which stimulated HGF secretion to enhance the clonogenic activity of hematopoietic progenitor cells and improving the hematopoietic microenvironment by enhancing CFU-F formation. Further research is necessary to determine whether *Gl*-PS promote myelopoiesis by preventing HSC cycling, thereby protecting them and enhancing the long-term reconstitution of hematopoiesis after Cy-induced myelosuppression.

Our findings may provide a mechanistic basis for using *G. lucidum* or *Gl*-PS as a possible alternative therapeutic means for lessening chemotherapy-induced myelosuppression via myelopoiesis potentiation, which needs further study and critical assessment.

ACKNOWLEDGMENTS

The authors thank Professor Shu-Qian Lin at the Fuzhou Institute of Green Valley Bio-Pharm Technology for generously providing *Gl*-PS.

REFERENCES

- Bear, H. D. (1986). Tumor specific suppressor T-cells which inhibit the in vitro generation of cytolytic T cells from immune and early tumor bearing host spleens. *Cancer Res.* 46, 1805–1812.
- Chen, H. S., Tsai, Y. F., Lin, S., Lin, C. C., Khoo, K. H., Lin, C. H., and Wong, C. H. (2004). Studies on the immunomodulating and anti-tumor activities of *Ganoderma lucidum* (Reishi) polysaccharides. *Bioorg. Med. Chem.* 12, 5595–5601.
- Chen, J. J., Zhang, Y., Wang, X. M., Li, K. H., Liu, G. F., Wang, Q. C., Wu, X. P., and Lin, B. H. (2000). Studies on the pharmacological effects of the polysaccharides of *Ganoderma lucidum* II. The radiation-proof effect and elevating white blood cells action. *Strait Pharm. J.* 04, 15–17.
- Chen, W. Y., Yang, W. B., Wong, C. H., and Shih, D. T. B. (2010). Effect of Reishi polysaccharides on human stem/progenitor cells. *Bioorg. Med. Chem.* 18, 8583–8591.
- Cheng, L. M., and Wang, Q. R. (2002). Hematopoietic inhibitors elaborated by bone marrow endothelial cells. *Zhongguo Shi Yan Xue Ye Xue Za Zhi* 10, 485–491.
- Gutschalk, C. M., Herold-Mende, C. C., Fusenig, N. E., and Mueller, M. M. (2006). Granulocyte colony-stimulating factor and granulocyte-macrophage colony-stimulating factor promote malignant growth of cells from head and neck squamous cell carcinomas in vivo. *Cancer Res.* 66, 8026–8036.
- Hassan, H. T., and Zander, A. (1996). Stem cell factor as a survival and growth factor in human normal and malignant hematopoiesis. *Acta Haematol.* 95, 257–262.
- Hatano, R., Takano, F., Fushiya, S., Michimata, M., Tanaka, T., Kazama, I., Suzuki, M., and Matsubara, M. (2004). Water-soluble extracts from *Angelica acutiloba* Kitagawa enhance hematopoiesis by activating immature erythroid cells in mice with 5-fluorouracil-induced anemia. *Exp. Hematol.* 32, 918–924.
- Homung, R. L., and Longo, D. L. (1992). Hematopoietic stem cell depletion by restorative growth factor regimens during repeated high-dose cyclophosphamide therapy. *Blood* 80, 77–82.
- Jin, M., Jeon, H., Jung, J. H., Kim, B., Shin, S. S., Choi, J. J., Lee, J. K., Kang, C. Y., and Kim, S. (2003). Enhancement of repopulation and hematopoiesis of bone marrow cells in irradiated mice by oral administration of PG101, a water-soluble extract from *Lentinus lepideus*. *Exp. Biol. Med.* 228, 759–766.
- Liao, H. F., Chen, Y. J., and Yang, Y. C. (2005). A novel polysaccharide of black soybean promotes myelopoiesis and reconstitutes bone marrow after 5-fluorouracil- and irradiation-induced myelosuppression. *Life Sci.* 77, 400–413.
- Lin, S. Q., Wang, S. Z., Lin, Z. B., and Lin, Y. X. (2003). Isolation and identification of active components of *Ganoderma lucidum* cultivated with grass and wood log I. Extraction, purification and characterization of glycopeptide. *Chin. Tradit. Herb. Drugs* 34, 33–35.
- Lin, Z. B. (2005). Cellular and molecular mechanisms of immunomodulation by *Ganoderma lucidum*. *J. Pharmacol. Sci.* 99, 144–153.
- Liu, Y. F., Tang, Q. J., Zhang, J. S., Yang, Y., Zhou, S., Wu, D., Jia, W., and Feng, N. (2011). Monosaccharide composition analysis of two polysaccharide fractions from *Ganoderma lucidum* and their effects on inhibiting tumor growth in mice by 5-fluoracil. *Food Sci.* 11, 288–291.
- Liu, Z. F., Chen, S. L., Yang, S. R., Chu, F., Luo, J., Deng, Z. M., and Chai, M. B. (1985). Studies of anti-radiation and leucopoietic activities of *Ganoderma sinense* polysaccharides. *Jiangxi Sci.* 01, 1–8.
- Pedrazzoli, P., Bacciocchi, G., Bergamaschi, G., Cazzola, M., Danova, M., and Gibelli, N. (1995). Effects of granulocyte-macrophage colony-stimulating factor and interleukin-3 on small cell lung cancer cells. *Lung Cancer* 12, 152–152.
- Steinbrook, R. (2007). Erythropoietin, the FDA, and oncology. *N. Engl. J. Med.* 356, 2448–2451.
- Thornton, B. P., Vetvicka, V., Pitman, M., Goldman, R. C., and Ross, G. D. (1996). Analysis of the sugar specificity and molecular location of the β -glucan-binding lectin site of complement receptor type 3 (CD11b/CD18). *J. Immunol.* 156, 1235–1246.
- Wang, Q. R., Tan, M. Q., and Cheng, L. M. (2005). *Hematopoietic Physiology*, Chap. 6, 7 and 11. Changsha: Central South University Press.
- Wu, J. Y., Chen, G. Y., Jiang, H. T., Hou, Y. R., and Zhang, Y. Q. (2003). Study on radioprotective and health care effect of *Ganoderma lucidum* polysaccharides mixture. *J. Nanjing Norm. Univ.* 3, 79–81.
- Zhao, L. Y., Dong, Y. H., Chen, G. T., and Hu, Q. H. (2010). Extraction, purification, characterization and antitumor activity of polysaccharides from *Ganoderma lucidum*. *Carbohydr. Polym.* 80, 783–789.

- Zhu, X. L., Chen, A. F., and Lin, Z. B. (2007). *Ganoderma lucidum* polysaccharides enhance the function of immunological effector cells and hematopoiesis of immunosuppressed mice. *J. Ethnopharmacol.* 111, 219–226.
- Zhu, X. L., and Lin, Z. B. (2006). Modulation of cytokines production, granzyme B and perforin in murine CIK cells by *Ganoderma lucidum* polysaccharides. *Carbohydr. Polym.* 63, 188–197.
- Conflict of Interest Statement:** The authors declare that the research was conducted in the absence of any commercial or financial relationships that could be construed as a potential conflict of interest.
- Received: 06 December 2011; paper pending published: 04 January 2012; accepted: 07 February 2012; published online: 24 February 2012.
- Citation: Zhu X-L, Liu J-H, Li W-D and Lin Z-B (2012) Promotion of myelopoiesis in myelosuppressed mice by *Ganoderma lucidum* polysaccharides. *Front. Pharmacol.* 3:20. doi: 10.3389/fphar.2012.00020
- This article was submitted to *Frontiers in Ethnopharmacology*, a specialty of *Frontiers in Pharmacology*. Copyright © 2012 Zhu, Liu, Li and Lin. This is an open-access article distributed under the terms of the Creative Commons Attribution Non Commercial License, which permits non-commercial use, distribution, and reproduction in other forums, provided the original authors and source are credited.